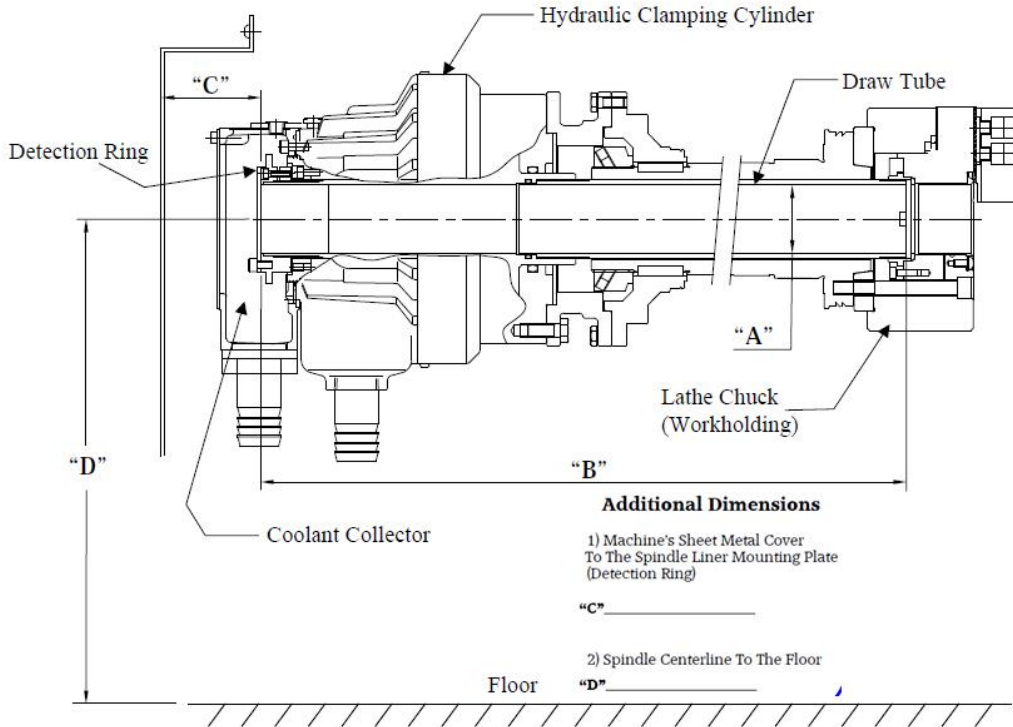


Attached below is an information sheet and diagram that we will need you to fill out in order to provide you with the correct spindle liners for your lathe. The Yellow section is required information to determine the Liner design number, The blue section lets us determine the stock sizes to accommodate, meanwhile the orange section just tells us a little about yourself, your company, also allowing us to add you into our system for a smoother, faster, and easier return visit.

Typical CNC Lathe Spindle Configuration



Spindle Liner Requests				
Customer Name				
Name				
Phone Number:				
Email Address:				
Mark "X" for Selected	End User []	Dealer []		
Mark "X" for Selected	New Customer []	Previously Order []		
Mark "X" for Selected How did you hear about us?	Internet Search []	Lathe Dealer Referral []	Previously Ordered []	Other []
(if previously ordered) Liner Number				
(if previously ordered) Liner Number (EX: L9516-XXXX)				
(if previously ordered) Bar Stock Sizes				
(if previously ordered) Bar Stick Length				
(if previously ordered) Bar Stock Material				
(if previously ordered) Mark "X" for Selected	Round []	Hex []	Square []	
If previously ordered, no need to fill items below.				
Lathe Make/Model				

Barfeeder Make /Model				
Hydraulic Cylinder (Actuator) Make/Model:				
a. Draw Tube ID				
b. Spindle Length				
c. Distance				
Please Quote (Standard Liners, Quick Change, 2PC);				
Bar Stock Sizes				
Bar Stock Length				
Bar Stock Material				
Mark "X" for Selected	Round []	Hex []	Square []	
Specify Required ID:				
Barfeed Channel/ Pusher Sizes				
Special Requirements:				
Extension Length:				
Chuck Make/ Model				
Additional Questions/Comments:				